



ESA - MOST Dragon 2 Programme

2011 DRAGON 2 SYMPOSIUM

中国科技部-欧洲空间局合作“龙计划”二期

“龙计划”二期2011年学术研讨会

Project Summary

id. <5314> <FOREST ECOSYSTEMS>

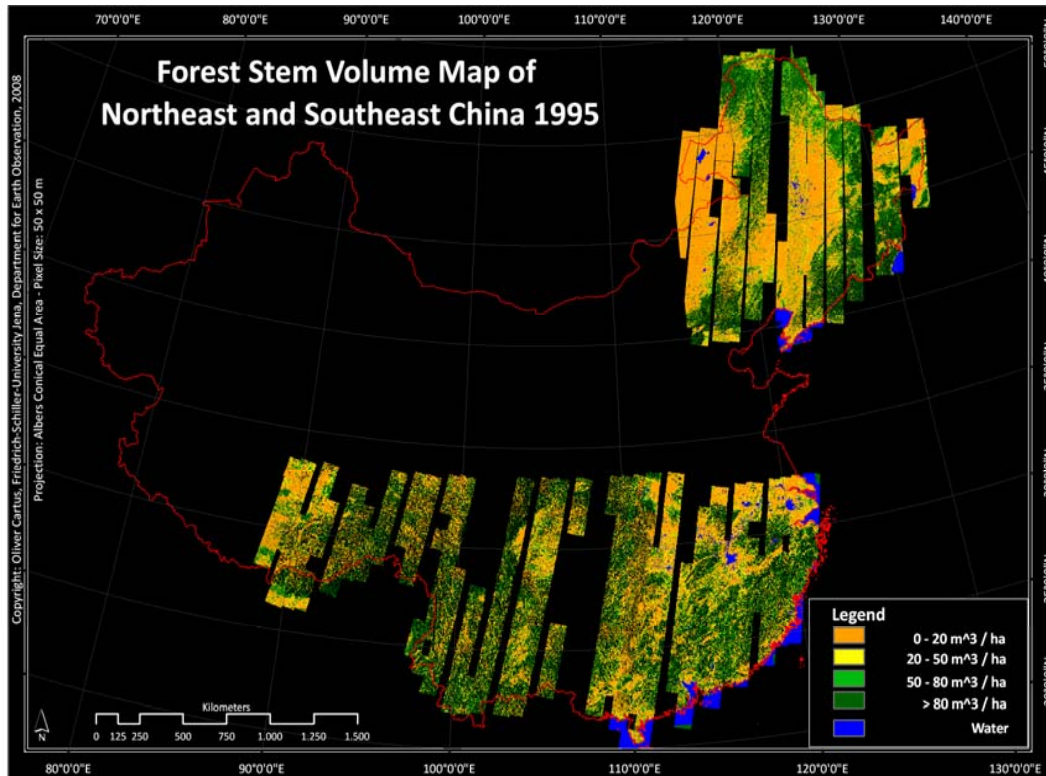
<Wednesday, 22 June>

Main Results

- 1995: GSV map based on ERS-1/2 Tandem Coherence, NE & SE China (50 m) (D1)
- 2005: Forest/ Non-forest map based on ASAR AP, NE China (50 m)
- 2007/08: GSV map based on ASAR GMM, NE China (BIOMASAR, 1 km)

Main Results

- **1995:** GSV map based on ERS-1/2 Tandem Coherence, NE & SE China (50 m)
- 2005: Forest/ Non-forest map based on ASAR AP, NE China (50 m)
- 2007/08: GSV map based on ASAR GMM, NE China (BIOMASAR, 1 km)



Validation

Forest/ non-forest based on NLCD

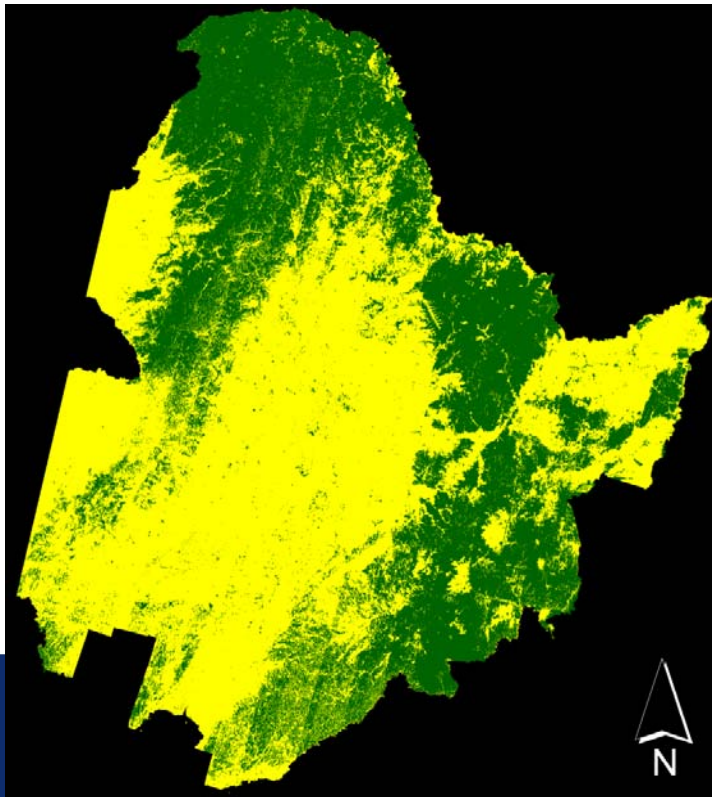
Overall Agreement: 79 % (NE) / 68 % (SE)

GSV based on ALS retrieved GSV

Overall Agreement: 79 %

Main Results

- 1995: GSV map based on ERS-1/2 Tandem, NE & SE China (50 m)
- **2005: Forest/ Non-forest map based on ASAR AP, NE China (50 m)**
- 2007/08: GSV map based on ASAR GMM, NE China (BIOMASAR, 1 km)



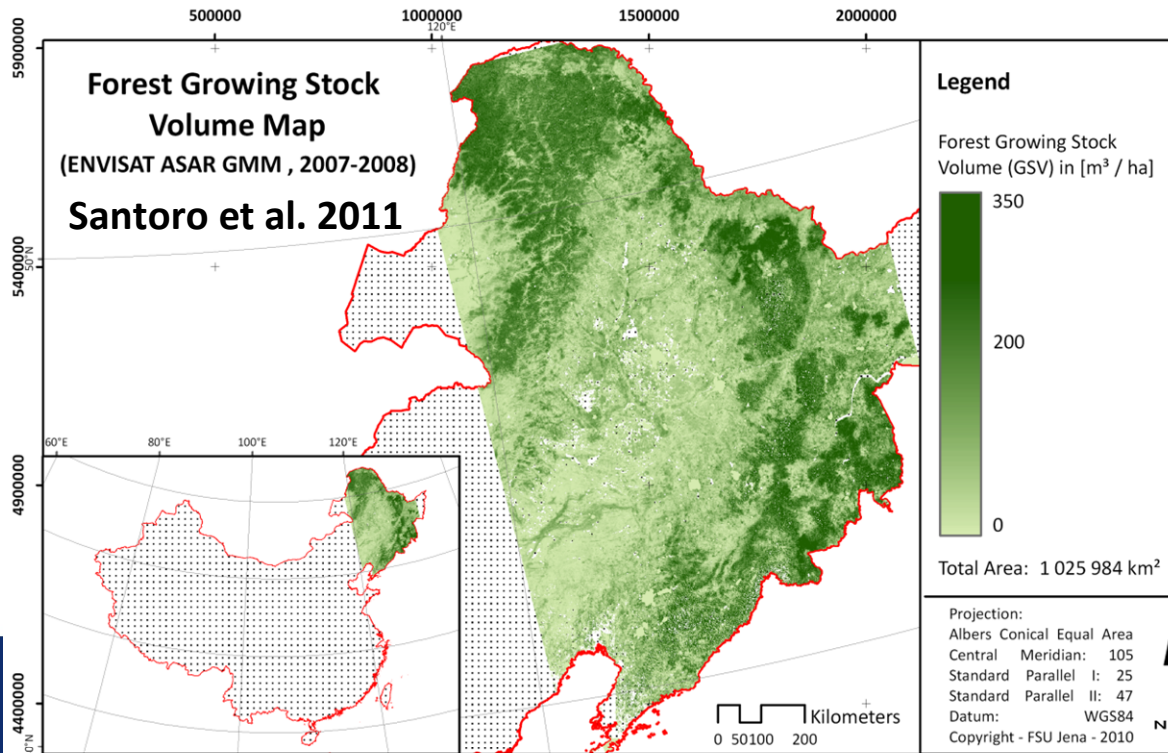
Validation

Forest/ non-forest based on NLCD

Overall Agreement: 90.1 %

Main Results

- 1995: GSV map based on ERS-1/2 Tandem, NE & SE China (50 m)
- 2005: Forest/ Non-forest map based on ASAR AP, NE China (50 m)
- **2007/08: GSV map based on ASAR GMM, NE China (BIOMASAR, 1 km)**



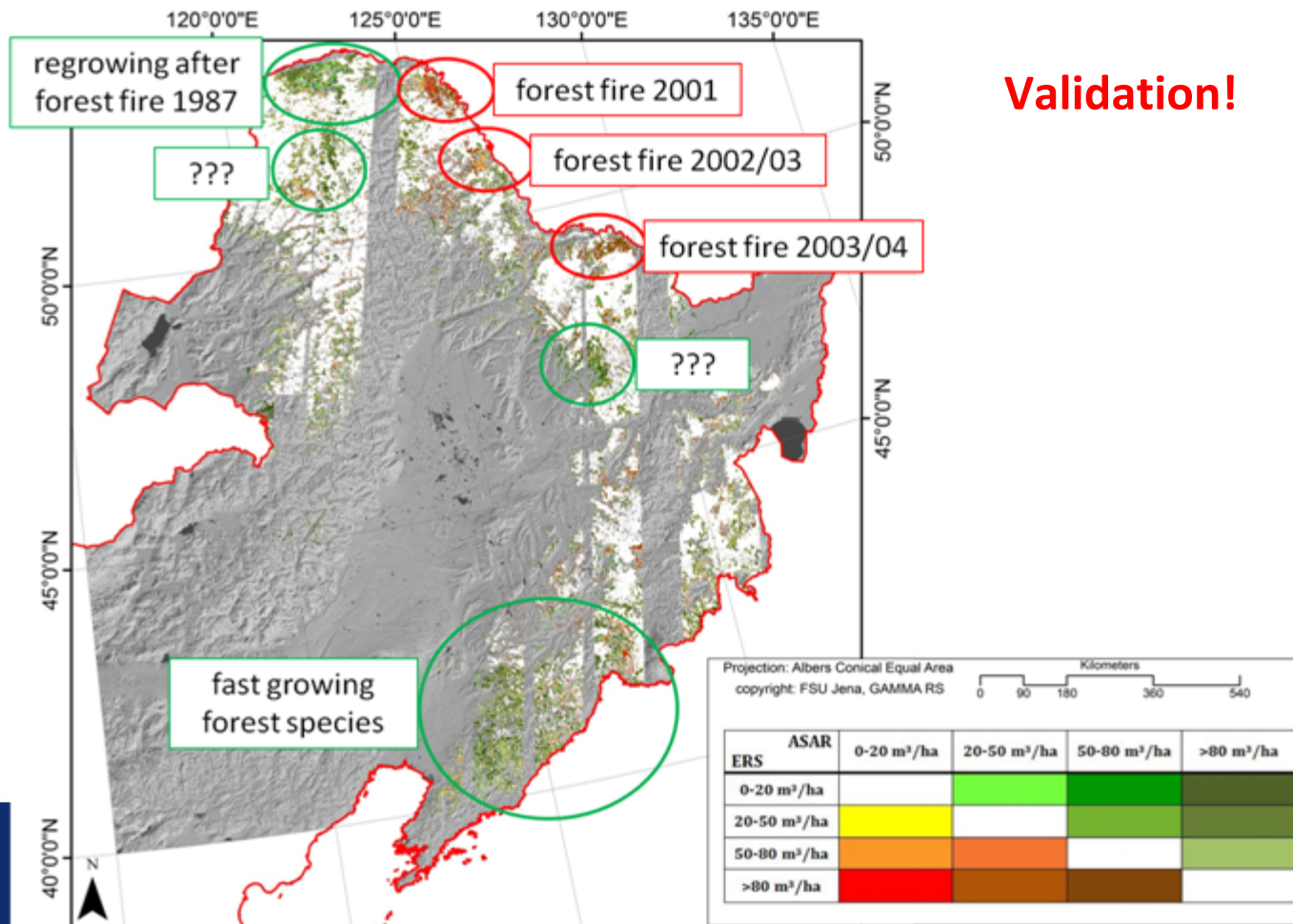
Validation

Forest/ non-forest based on NLCD

Overall Agreement: 79.9 %

Main Results

• GSV Change 1995-2007/08



Main Results

- GSV Change 1995-2007/08
- completion of Feilong Lings P.hD.
- completion of two DRAGON related M.Sc. Theses (Reik Leiterer & Johannes Reiche)
-> peer reviewed publication in preparation
- work visit of Feilong Ling and Yanping Huang at FSU, Dec-Jan 2010/11
-> data exchange, work on different project subjects, training ...

List of Publications

- ISDE6, Beijing 2009
- Dragon MTR paper 2010
- 2 paper at ESA Living Planet Symposium, Bergen, Norway 2010
- ISRSE34, Sydney, Australia 2011
- Cartus et al. 2011, International Journal of Remote Sensing

Project Planning – 2011 and 2012

- Joint FSU & CAF validation field trip in NE China (September-October 2011)
- production of BIOMASAR GSV maps for 2005, 2010 for NE China
- Integration of other Dragon products (Fire, Crop)
- Forest change products
 - 1995 – 2005 Forest/Non-forest (50 m) (CAF)
 - 1995 – 2005 – 2007/08 – 2010 GSV (1 km) (FSU)